

Title

WAMP INSTALLATION WEB INTERFACE EMULATION WITH IXSEA PRODUCTS

Object:

How to install the wamp server in order to use the web MMI of the product without any real connection with a unit.

Details

Writer	ENO			
Document state	<input checked="" type="checkbox"/> Draft	<input type="checkbox"/> Validated by	Date:/...../.....	
First diffusion list				

Modifications history

Edition	Date	Pages	Object	Writer
A	18/01/2010	All	Creation	ENO

TABLE OF CONTENTS

1	WAMP SERVER	2
1.1	What is wamp SERVER?	2
1.2	AIM.....	2
1.3	Where to get the package instalation ?	2
2	INSTALLATION	2
3	WEB INTERFACE INSTALLATION.....	9
4	HOW TO LAUNCH THE PRODUCT INTERFACE ?.....	10

 IXSEA <i>Internal Use ONLY</i>	WEB INTERFACE EMULATION	Creation/Valid. 17/01/2010	Doc. Ref.	Ed.A
---	------------------------------------	-------------------------------	-----------	------

1 WAMP SERVER

1.1 WHAT IS WAMP SERVER?

WampServer will install Apache, PHP5 and MySQL on your Windows system. WampServer comes with a service manager as a tray icon. It will allow you to easily manage your server and make an emulation of the web MMI from Ixsea product.

1.2 AIM

It will allow you to make demonstration/training without any unit connected. Moreover you can advise customer if he has questions on the product setup, step by step which is very handfull.

1.3 WHERE TO GET THE PACKAGE INSTALATION?

The package can be found on the support ftp directory:

- ✓ /home/SUPPORT/COMMON SOFT TOOLS/WAMP_SERVER

Or you can download it from the web at the following address:

- ✓ <http://www.wampserver.com/en/download.php>
- ✓ <http://sourceforge.net/projects/wampserver/files/WampServer%202/WampServer%202.0/WampServer2.0i.exe/download>

2 WAMP INSTALLATION

The package can be found on the support ftp directory:
/home/SUPPORT/COMMON SOFT TOOLS

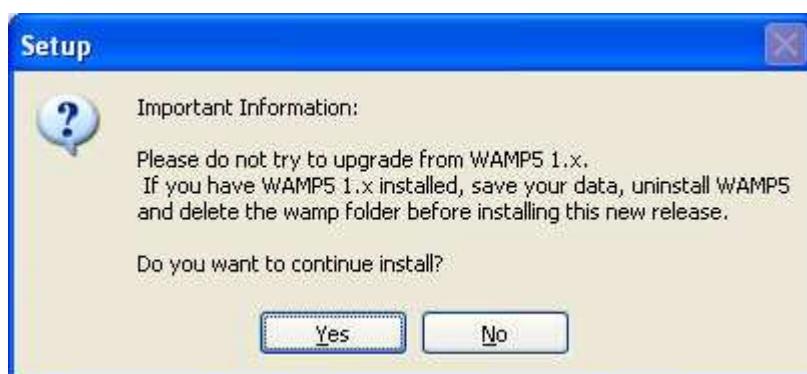
Save the file somewhere that you will be able to get to once it is finished completing. It is approximately 20 Megabytes, so depending on your connection, it may take a few minutes.



You should now see this icon wherever you chose to save the file. Double-click on it to start the installation.



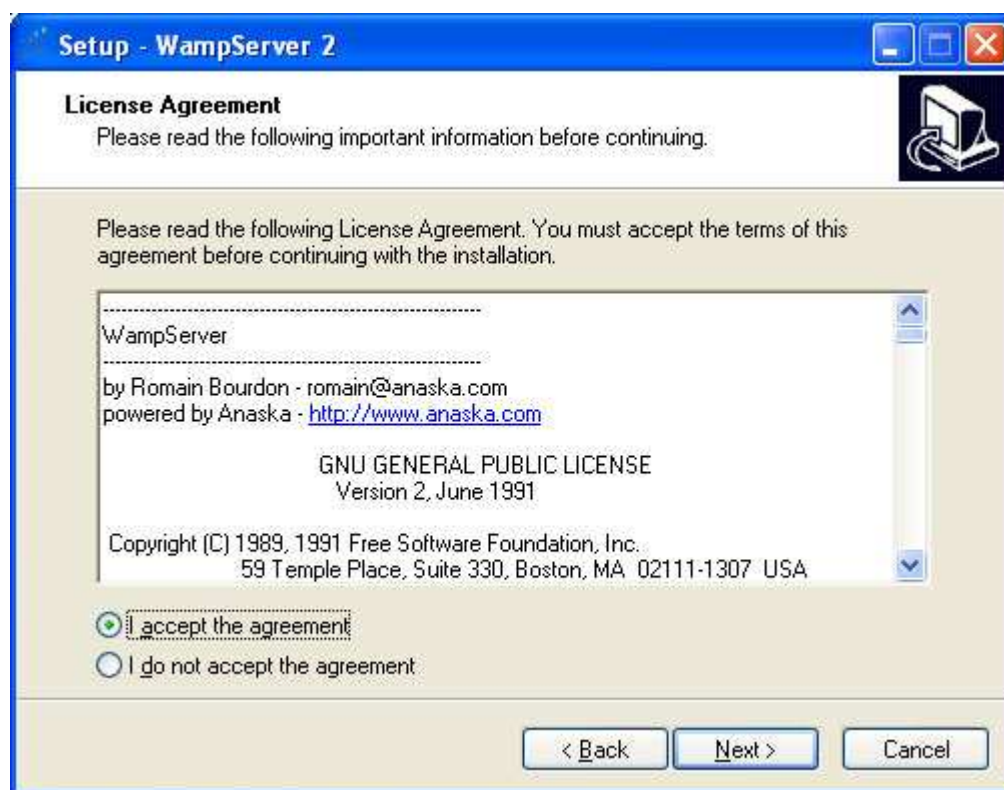
Select to run the file if you are prompted to do so.



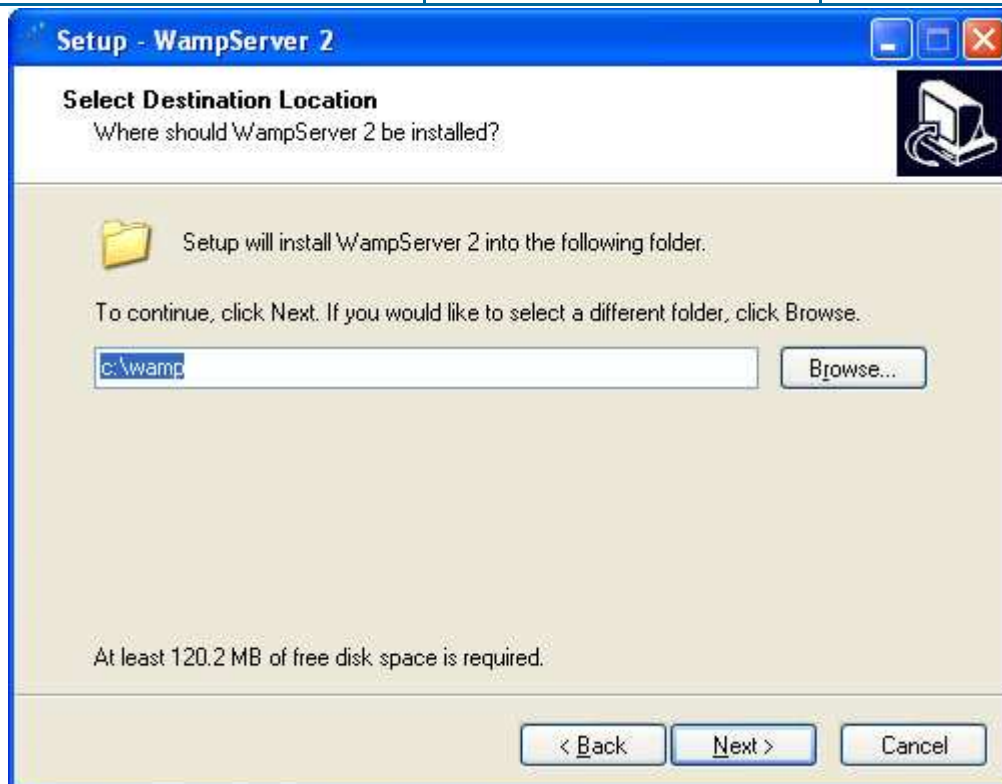
You will be prompted to not install this version over WAMP5 1.x. Click yes to continue with the installation.



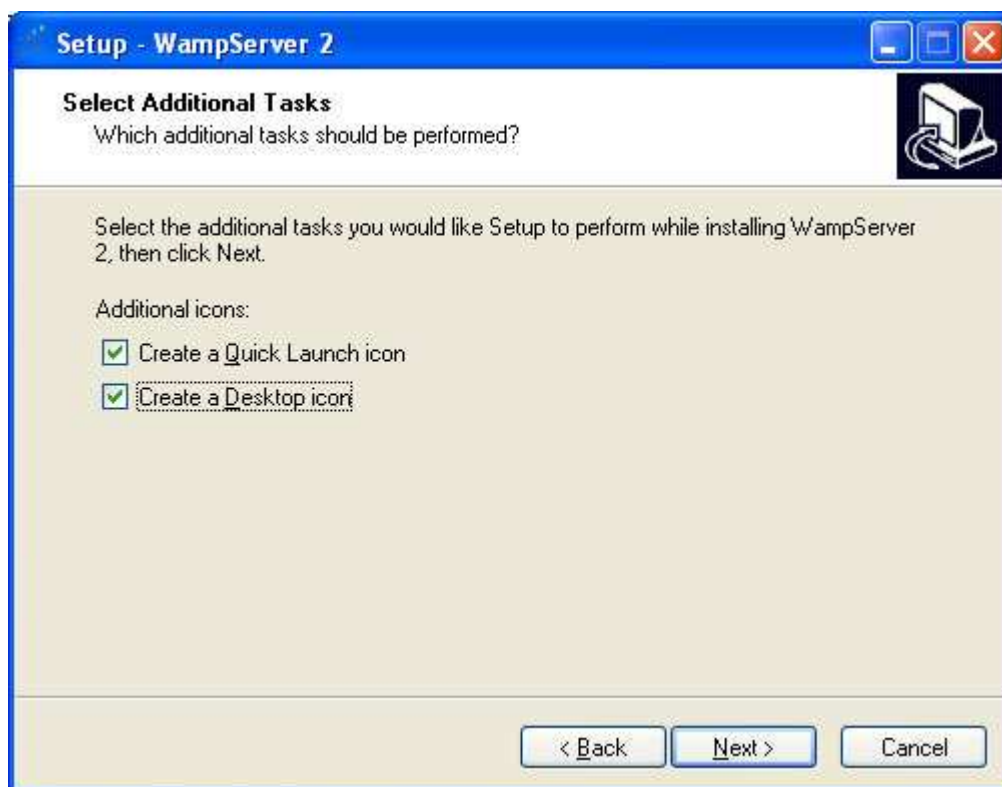
This first install window simply welcomes you to the installer for this application. Click next to continue.



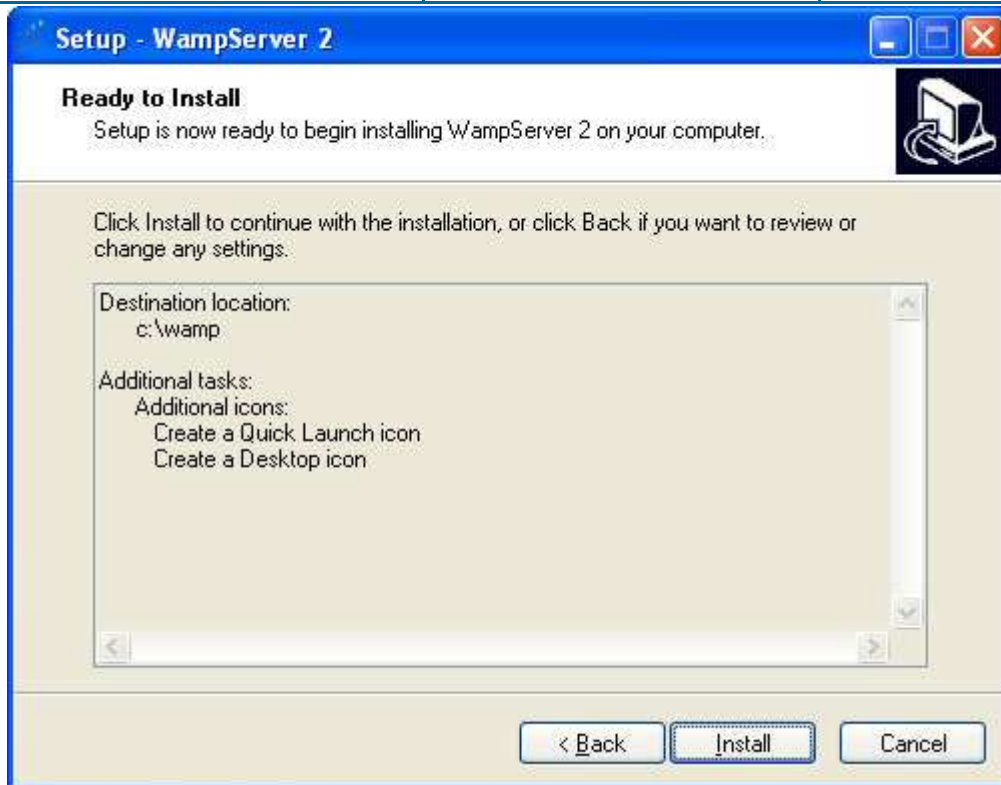
This window contains the GNU GENERAL PUBLIC LICENSE that will allow you to use this software. Once you review this click the I Accepts radial button and click next to continue.



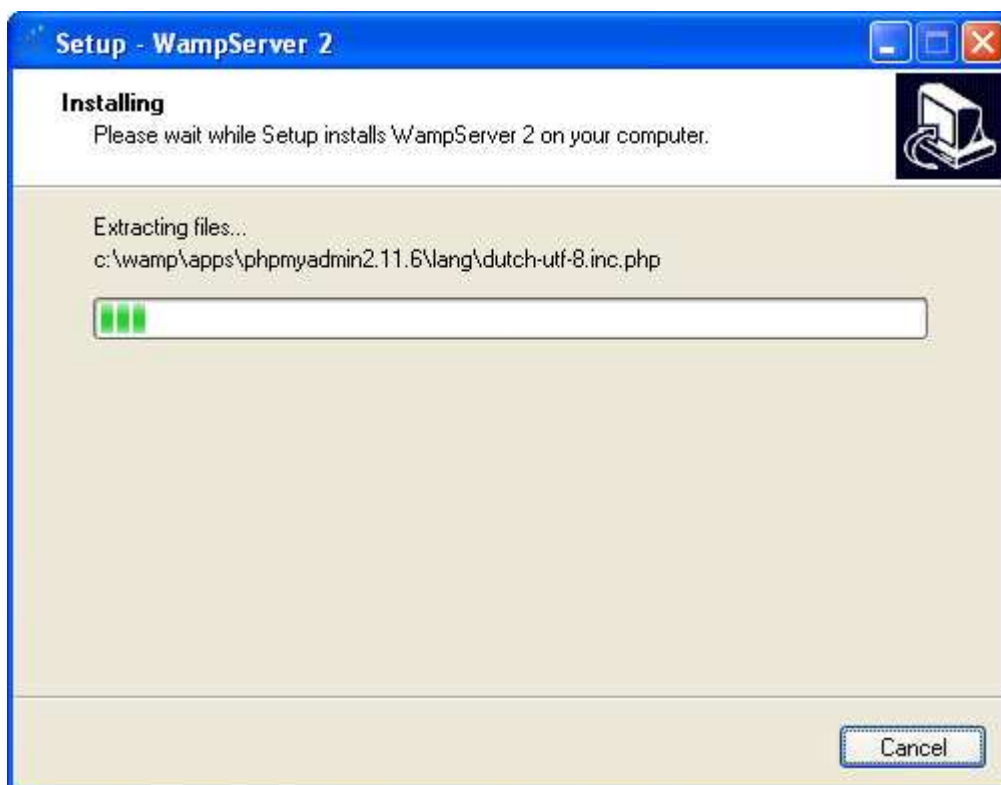
This box let's you pick where you would like to install all of the files. You can change this if you like but if you do, bear in mind that you should put it in a folder that does not contain any spaces as some browsers/servers have issues handling spaces in file names. This is also where your web files will be stored under a directory called 'www'. If you are unsure, leave this default.



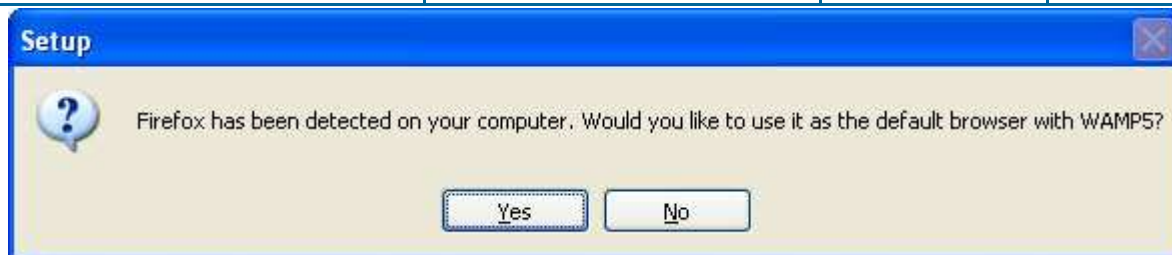
This window will allow you to create the desktop icon and the quick launch icon to start the server by the click of a button.



This window just reviews all installation options. Verify the settings are correct and click next to start installing the application.



This is installing the software.



You will get the above prompt to configure FireFox as your default browser for the WAMP Server if you would like, otherwise it will use Internet Explorer.



This window will allow you to configure your server to forward any e-mail that your php creates to a proper server and e-mail account so that they will go to the right person once you are using it. If you don't know these values or have the ability to use them, just leave them default.



This is the completion window. You have the ability to launch the server automatically after closing this window if you would like. Click Finish to start the application.



Once the server is running, you will see the above icon and the taskbar for the WAMP Server.



The above menu is what you will get if you simply left-click once on the tray icon.

Localhost – This option simply open the webpage that is stored in the home directory (which is “C:\wamp\www\index.php” by default). You can also get to this page by typing “localhost” in your web browser, or by typing 127.0.0.1 in your web browser.

 IXSEA <i>Internal Use ONLY</i>	WEB INTERFACE EMULATION	Creation/Valid. 17/01/2010	Doc. Ref.	Ed.A
---	------------------------------------	-------------------------------	-----------	------

phpMyAdmin – This option will launch phpmyadmin (which can also be launched by going to <http://localhost/phpmyadmin/> in your web browser. phpMyAdmin is a tool to manage, query, select, and browse your MySQL databases. It is php based and relatively simple to use.

SQLSiteManager – This launches a tool to create and delete entire databases. You use this to create the databases and use phpmyadmin to manipulate the data in them. This can also be access from <http://localhost/sqlitemanager/> in your web browser.

www Directory – this will open the folder where your sites files are stored. These are the files that are called when you go to localhost.

Apache – This area has the configuration settings for Apache and will allow you to make configuration that you need to make to this service.

PHP – This area has the configuration settings for PHP and will allow you to make configuration that you need to make to this service.

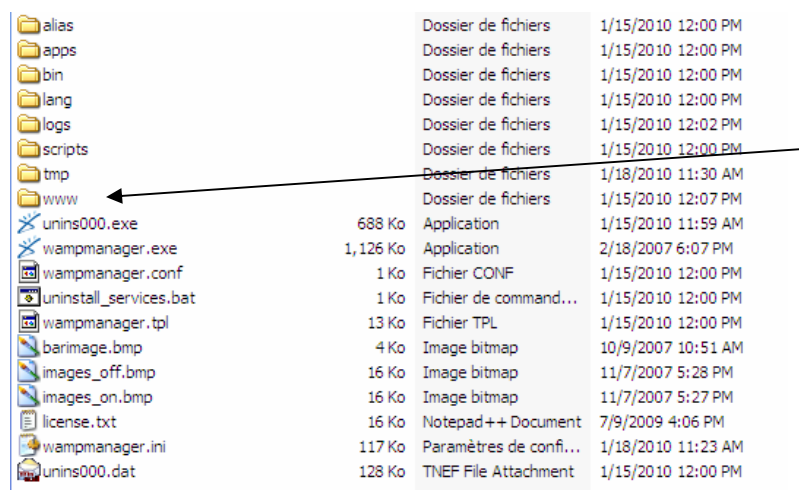
MySQL – This area has the configuration settings for MySQL and will allow you to make configuration that you need to make to this service.

Then you also have the options to control the services and take the server on and off line.

By default the server is set up with an index.php file that will show you the services that are started for the service. This file will also show you the projects that have started on your server based on the folders that are within the www folder.






3 WEB INTERFACE INSTALLATION

Go into C:\Wamp (directory of the installation mandatory used) – select the WWW directory.



 Web_ROVINS_1.71h_1.13  index.php	Dossier de fichiers 37 Ko	1/15/2010 12:07 PM 1/15/2010 12:00 PM
--	------------------------------	--

Place the package in this directory.
 Typical architecture of such directory is (ex for ROVINS)

 conf	Dossier de fichiers	8/21/2009 2:22 PM
 _GIWIK_	Dossier de fichiers	1/15/2010 12:07 PM
 cgi-bin	Dossier de fichiers	1/15/2010 12:07 PM
 control	Dossier de fichiers	1/15/2010 12:07 PM
 control_expertview	Dossier de fichiers	1/15/2010 12:07 PM
 datalogger	Dossier de fichiers	1/15/2010 12:07 PM
 datalogging	Dossier de fichiers	1/15/2010 12:07 PM
 images	Dossier de fichiers	1/15/2010 12:07 PM
 installation	Dossier de fichiers	1/15/2010 12:07 PM
 installation_inputs	Dossier de fichiers	1/15/2010 12:07 PM
 installation_mechanical	Dossier de fichiers	1/15/2010 12:07 PM
 installation_network	Dossier de fichiers	1/15/2010 12:07 PM
 installation_outputs	Dossier de fichiers	1/15/2010 12:07 PM
 maintenance	Dossier de fichiers	1/15/2010 12:07 PM
 ppp	Dossier de fichiers	1/15/2010 12:07 PM
 setup	Dossier de fichiers	1/15/2010 12:07 PM
 setup_calibration	Dossier de fichiers	1/15/2010 12:07 PM
 setup_init	Dossier de fichiers	1/15/2010 12:07 PM
 setup_warnings	Dossier de fichiers	1/15/2010 12:07 PM
 index.html	1 Ko Firefox Document	1/15/2009 4:20 PM
 status.js	36 Ko JScript Script File	3/26/2009 5:08 PM
 msg.js	35 Ko JScript Script File	5/11/2009 2:19 PM
 app.js	20 Ko JScript Script File	8/25/2009 12:49 PM
 vssver.scc	1 Ko Fichier SCC	8/26/2009 9:36 AM

4 HOW TO LAUNCH THE PRODUCT INTERFACE?

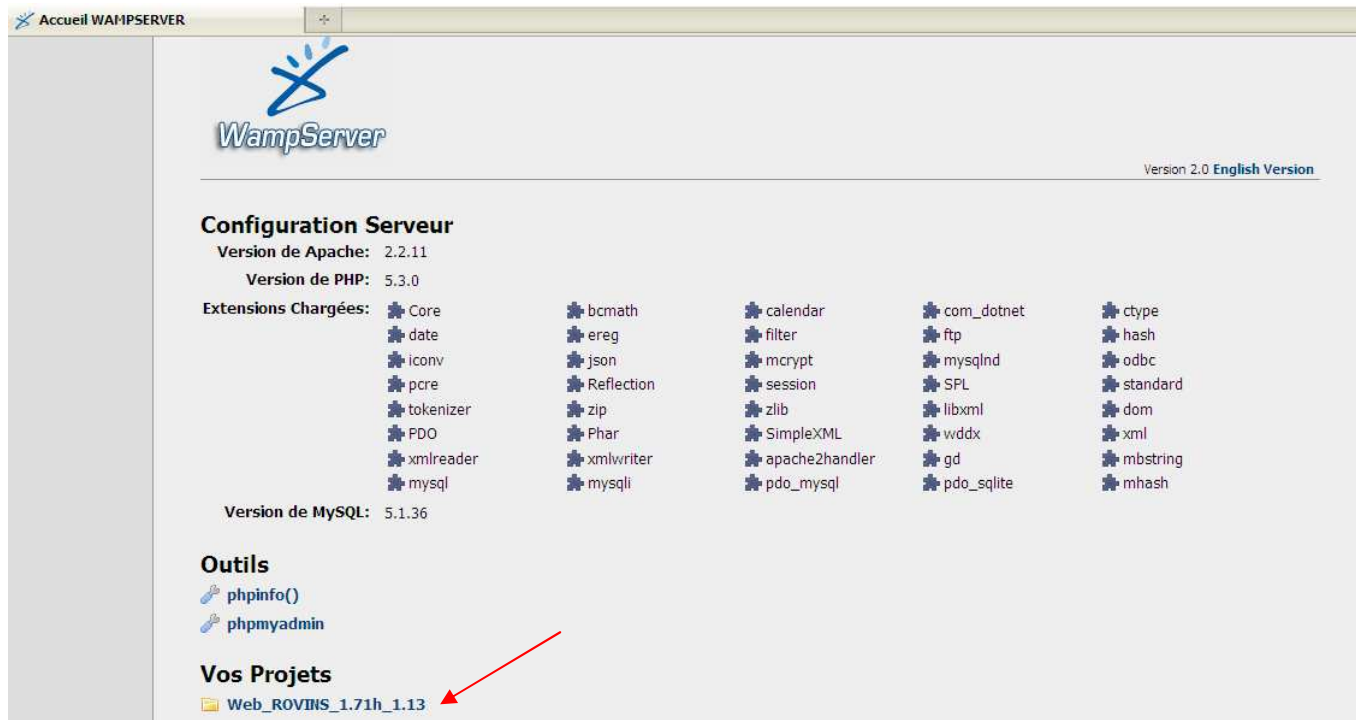
Launch the wamp server from the windows menu.
 Check that you have the foliwing icon in your task bar (white):



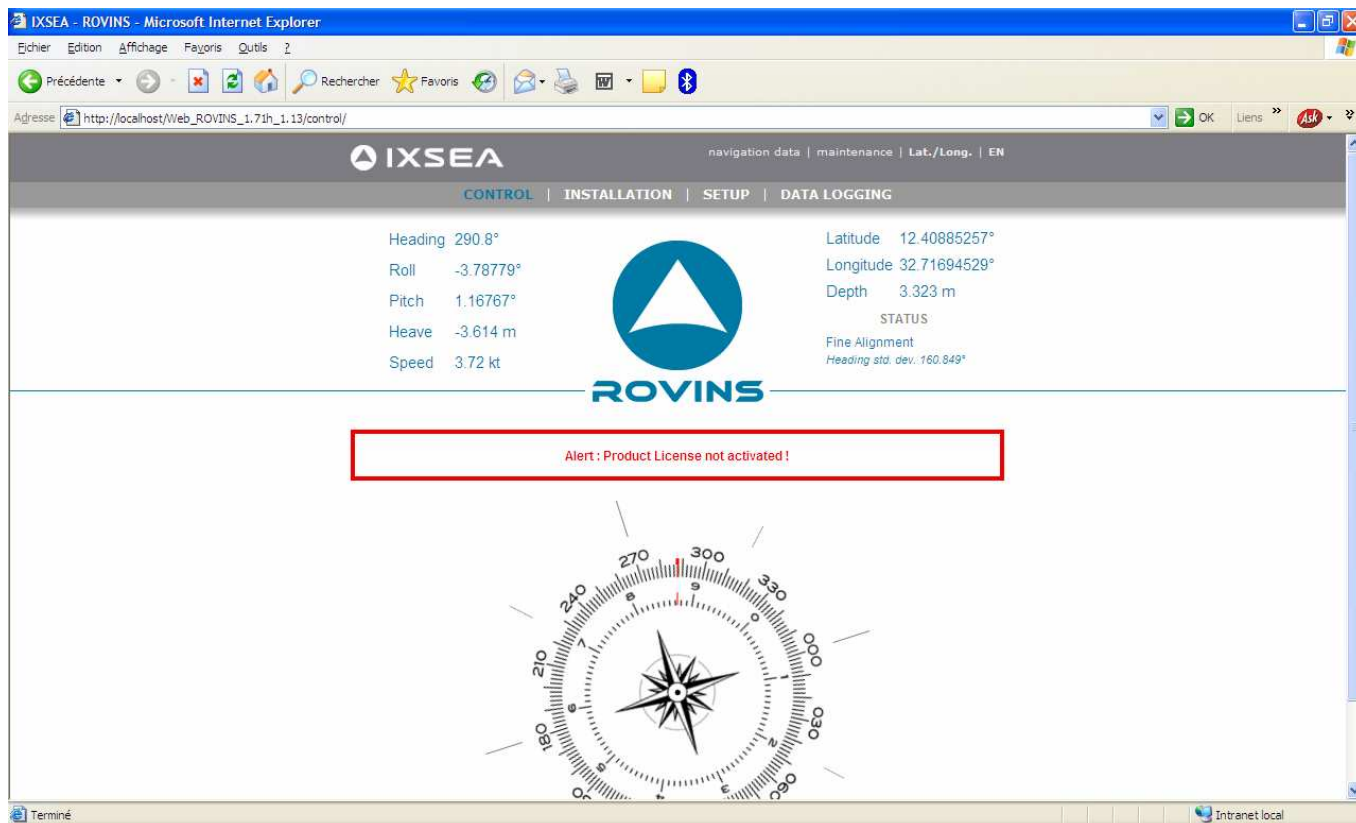
In your web browser type, in the address bar menu:



Then you should get the following page:



By clicking on the project corresponding to the product you will get access the web interface: (ex: ROVINS)



If you have a blank page instead it means that the wamp sever is not correctly setup or not active. (Relaunch it and start all services)